

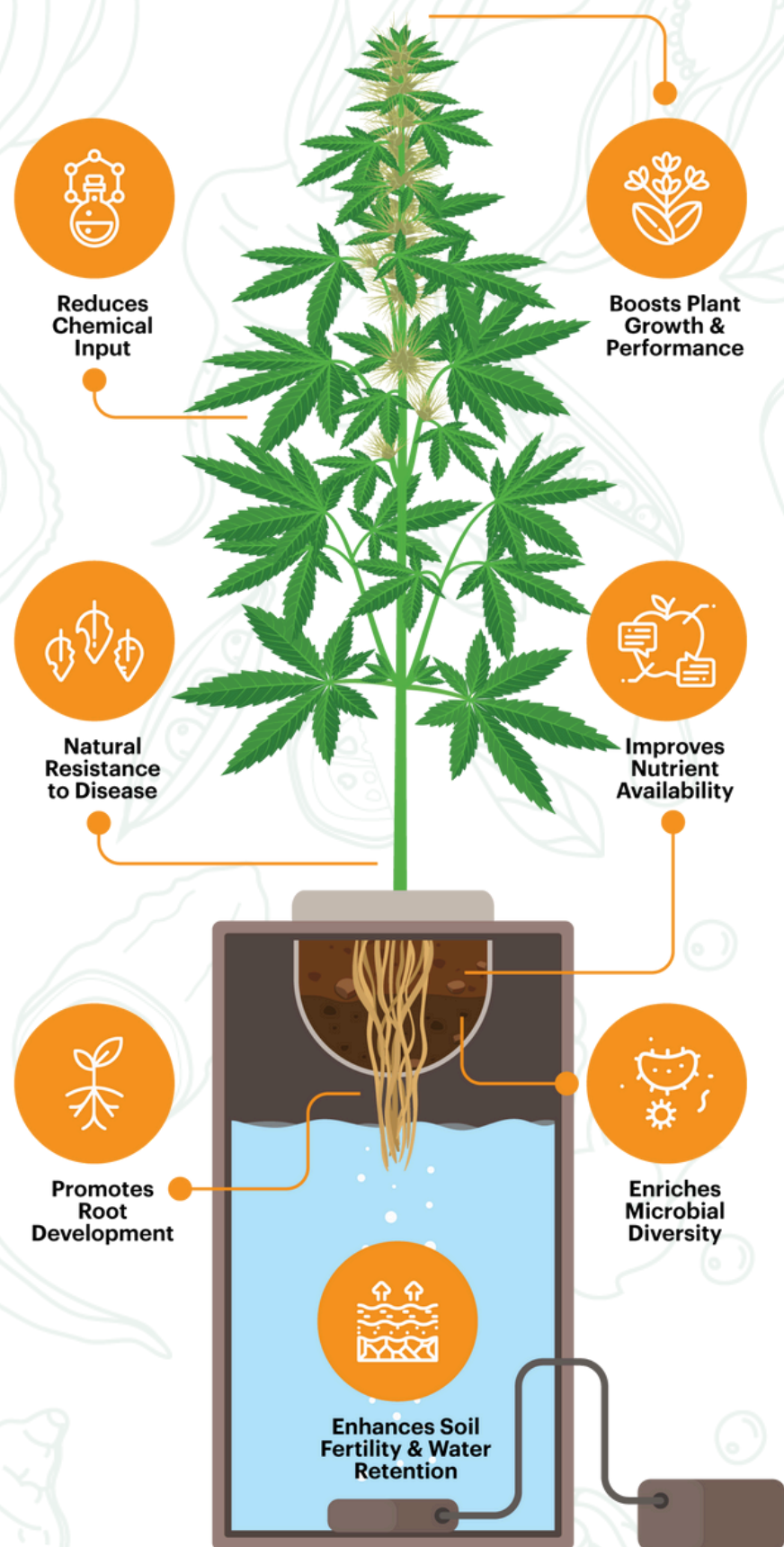


Cannabis

**EM•1[®] Overview +
Peer Recommendations**



Benefits of EM•1®



Activating EM•1®

Step 1: In a clean container, add 1 part (5%) of EM•1®, and 1 part (5%) of pure molasses, mixed in 18 parts (90%) of clean water. Mix well to form a homogeneous solution.

Step 2: Leave to ferment for 7 days. For best results, activate in temperatures equal or greater than 62°F.

Step 3: Activated EM•1® is ready to use from the 7th day, when the pH of the solution is between 3.2-3.6, or when it has a pleasant bittersweet smell and the color changes from dark brown to orange-brown.

How To Use EM•1®

For Substrate (m2):

Dose: Use 5ml/m² per week. • It can be used in the fertigation system or simply diluted in the water reservoir tank or applied directly to the root region.

For Substrate (glass):

Dose: Use 3ml/glass per week. • It can be used in the fertigation system or simply diluted in the water reservoir tank or applied directly to the root region. Horizontal or Vertical

Hydroponics:

Dose: Use 1 gallon/2,000 gallons of nutrient solution per week. • Dilute directly into the nutrient solution tank.

Aeroponia:

Dose: Use a solution with 100ppm or 0.01%. • Dilute directly into the supply tank.



ChrisNPK

Testimony:

I use it to water my cannabis plants and also use it as a foliar. I'm getting a great boost in my cannabis, both my flowering ones and the ones still in veg.

In the veg. tent, I noticed specifically that there were 3 clones that still needed transplanting. They started turning yellow. While they were waiting I started using the EM-1. The plants went back to health without me having to up pot them. They are still there today, just growing.

Also, the flowers are obviously bigger and more resinous.



Activated EM-1®





SunnyGardensVT

Testimony:

This plant is checking all the boxes 6 weeks from seed. She is a vigorous one. Great structure and spacing. If she can yield what I expect from this cross, I believe we have a winner.





ZZGrows

Testimony:

Grown in homemade soil with EM-1, bokashi and coconut as per usual.





HotnSour3

Testimony:

I add EM-1 via foliar applications and I use it as a soil drench too.

It's been upwards of 94% humidity and I have zero signs of pm, plants health is on point, and the microbial life in my soil is off the charts.

The beneficial bacteria working synergistically with my mycelium team and all the other bacillus strains I've implemented into my soil have kept my plants growing with excessive rates of vigor.

I've already cut my plants back 14" across the entire canopy!! Trying to keep these things tame is a chore.

